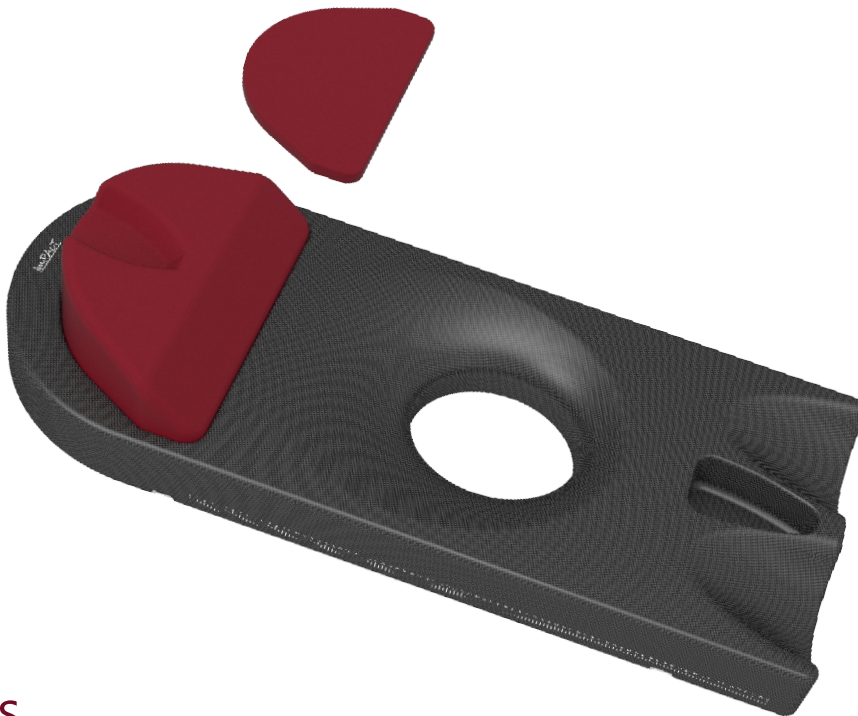


Im.PAcT BELLY BOARD

Model No. : R00BD05-00

Panacea's Im.PAcT Belly Board System is designed to improve the reproducibility of the patient's position and reduce the amount of small bowel within the radiation fields. The posterior region will be protected with a small aperture. Precise delivery of treatment to the pelvic region in prone position will be ensured with Im.PAcT Belly board.



Features...



Maximum radiolucent competence



Proficient daily reproducibility



Designed aiming at providing treatment in all the angles



Two Variants of Cushions to position head



Indexable on a variety of couch tops



Light weight



Optimum weight bearing capacity



No hostile effects on skin